



ARC Adventures 1G Setup – Windows PCs

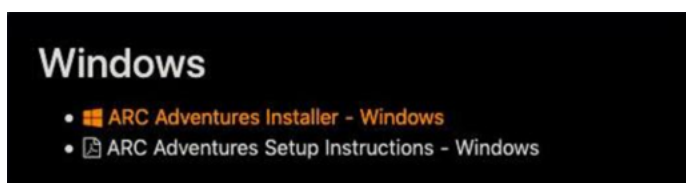
The following instructions will assist you in installing ARC Adventures on your personal Windows device to test ARC Adventures 1G.

Introduction

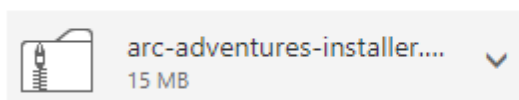
In order to install, update, and play ARC Adventures you must have a persistent wifi connection. This is necessary in order to sync accurate student data and to give you the best possible experience. If you have any questions about what information is shared please ask your district.

Step-By-Step Instructions

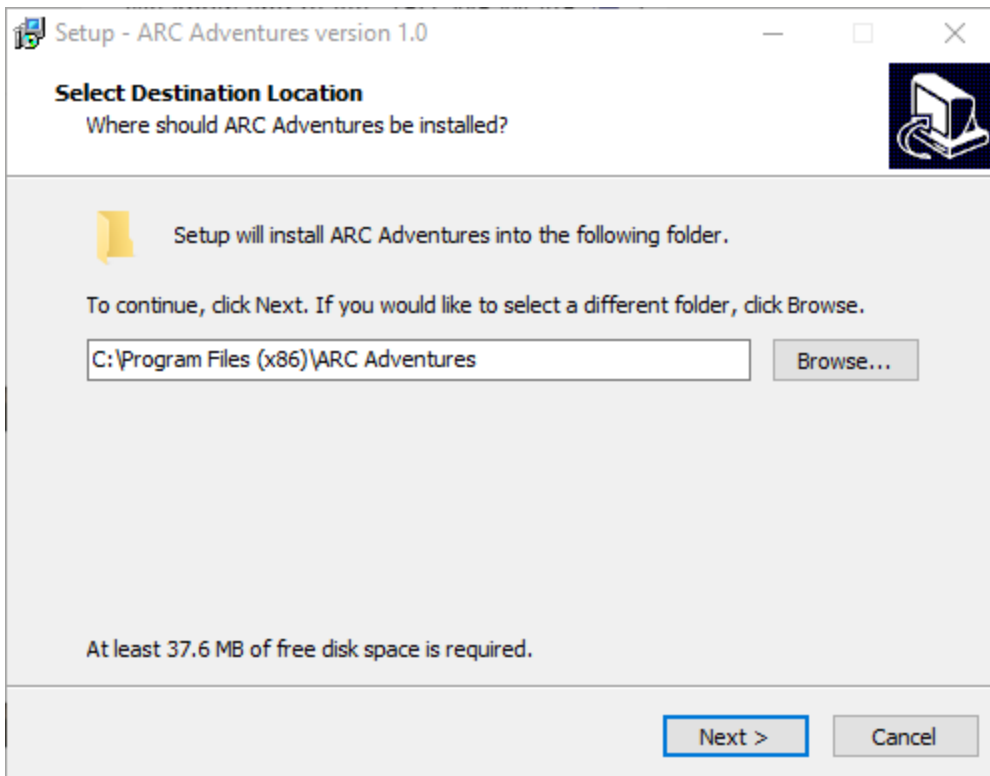
1. Navigate to your school districts unique web URL:
[https://arcadventures.com/download/\[name-of-your-school\]](https://arcadventures.com/download/[name-of-your-school])
2. Click the “ARC Adventures Installer - Windows” link. This will begin downloading the installation file.



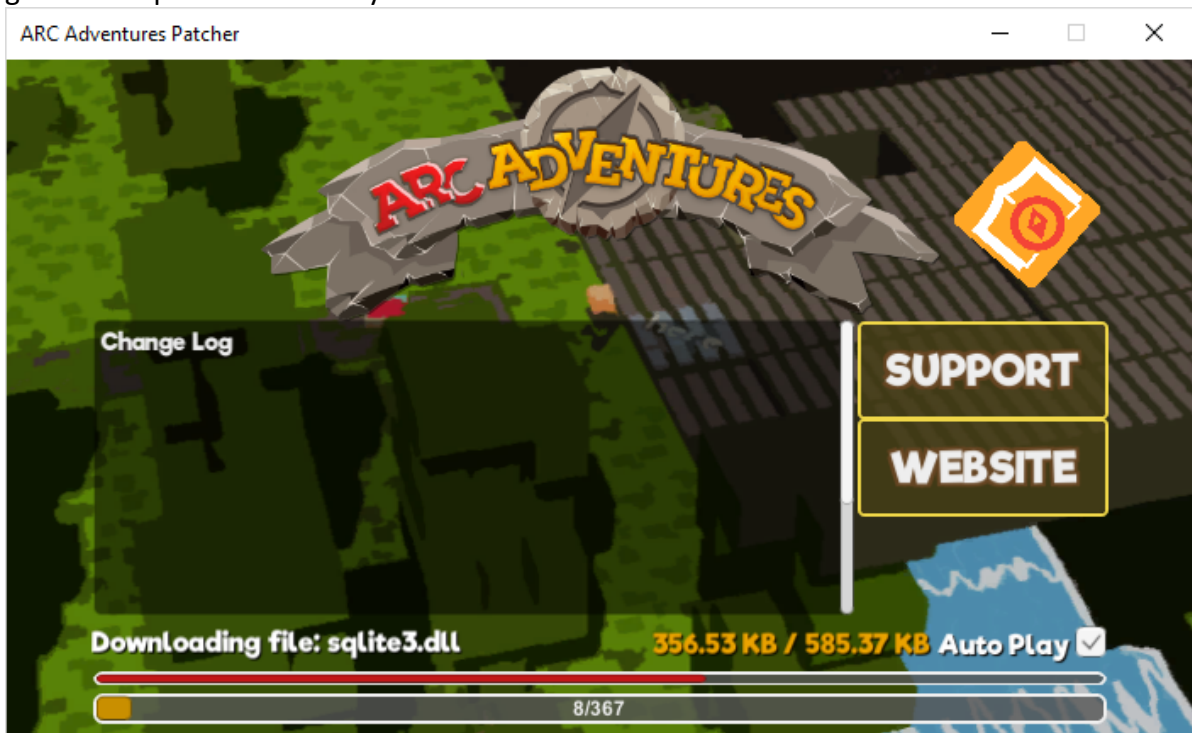
3. Select the completed installer from either your browser downloads or from inside your Windows downloads folder.



4. Navigate the following installation wizard by clicking the “Next” button, then select “Install”. Use the recommended settings unless instructed otherwise.



5. After the installation is complete, open the game (if it doesn't open automatically). The game will update to ensure you have the most recent version.



6. Now that you have successfully downloaded ARC Adventures, your child or student may begin learning and having fun after entering their unique Username and Password that has been issued by your school.